



Nov 1, 2020

Prices are subject to change without notice.

	Single Depth	Double Depth
Garden of Hope (Flat Granite or Slant Memorial)	\$ 1,095.00	
2nd Right of Interment		\$ 800.00
Garden of Honor (Flat Granite Memorial)	\$ 1,395.00	
2nd Right of Interment		\$ 800.00
Garden of Serenity (Flat Granite Memorial)	\$ 1,495.00	
2nd Right of Interment		\$ 800.00
Heritage Garden (Upright Monument or Flat Granite)	\$ 1,495.00	
2nd Right of Interment		\$ 800.00
Garden of Sunrise (Flat Granite Memorial)	\$1,495.00	
2nd Right of Interment		\$ 1,495.00
Garden of Peace (Upright Monument or Flat Granite)	\$1,895.00	
2nd Right of Interment		\$ 1,895.00
Garden of Love (Upright Monument or Flat Granite)	\$1,895.00	
2nd Right of Interment		\$ 1,895.00
Love Hedge (Upright Monument or Flat Granite)	\$2,195.00	
2nd Right of Interment		\$ 2,195.00
Peace Hedge (Upright Monument or Flat Granite)	\$2,195.00	
2nd Right of Interment		\$ 2,195.00
Garden of Memories (Flat Granite)	\$4,000.00	
Includes 2nd Right of Interment		
Garden of Legacy (Flat Granite)	\$4,000.00	
Includes 2nd Right of Interment		
Garden of Innocence Infant (Flat Granite Memorial)	\$ 500.00	
(no charge for Coppell residence)		

Each space will accommodate a full body burial and one urn of cremated remains or 2 urns of cremated remains. Each Space will accommodate two caskets.

Property owner or representative must pay second right of interment fee for any space that is going to have more than one body burial or cremated remains in it before first burial takes place. If second right of 2 caskets take place first casket must be set in a top seal vault. Second burial can use park requirement of a concrete grave liner.

Reflections Family Estates(Per Space)

Single Depth	Double Depth
\$ 10,000.00	\$ 10,000.00

2nd Right of Interment

Columbarium Niches

	Single	Companion
Level J	\$ 995.00	\$ 1,990.00
Level I	\$ 995.00	\$ 1,990.00
Level H	\$ 2,695.00	\$ 5,390.00
Level G	\$ 2,695.00	\$ 5,390.00
Level F	\$ 2,695.00	\$ 5,390.00
Level E	\$ 2,695.00	\$ 5,390.00
Level D	\$ 2,695.00	\$ 5,390.00
Level C	\$ 2,695.00	\$ 5,390.00
Level B	\$ 2,695.00	\$ 5,390.00
Level A	\$ 2,695.00	\$ 5,390.00

Four Person Niche

(Pricing includes the opening and closing of the niches)

Each single niche measures 12"x12" and companion 24" wide and 12" height.

Four Urns
\$ 10,780.00

Reflections Mausoleum Niche

	Single
Level 8	\$ 3,500.00
Level 7	\$ 3,500.00
Level 6	\$ 3,500.00
Level 5	\$ 3,500.00
Level 4	\$ 3,500.00
Level 3	\$ 3,500.00
Level 2	\$ 3,500.00
Level 1	\$ 3,500.00

Honor Eagle Niche

Single
\$ 3,500.00

Serenity Flag Pole Niche

Single
\$ 3,500.00

Lake Harper Shelter Niche

Single
\$ 5,500.00

Reflections Mausoleum Crypts

	Single	Companion
Level 6	\$ 5,995.00	\$ 10,995.00
Level 5	\$ 6,995.00	\$ 11,995.00
Level 4	\$ 7,995.00	\$ 12,995.00
Level 3	\$ 9,995.00	\$ 15,995.00
Level 2	\$ 15,995.00	\$ 24,995.00
Level 1	\$ 10,995.00	\$ 16,995.00

All Mausoleum will include Laser Etching, Name, Dates, Words of Endearment and one Picture.
Price does not include open and close of Mausoleum will be a charge of \$1200 at time of need

Garden of Memories Private Mausoleums Crypts

Custom Quote

Lake Harper Private Mausoleums Crypts

Starting

Land
\$300,000.00

Building

Custom Quote



**Professional Service Fee's
Opening and Closing**

Adult Interment Fee (Monday-Saturday 9:00am to 4:00pm.) **\$ 1,200.00**

Cremation Inurnment (Ground)(Monday-Saturday 9:00am to 4:00pm.) **\$ 800.00**

Cremation Outside Niche

Infant Interment **\$ 800.00**
(Infant is any child Under age of 1 year)

Disinterment Fee **\$ 1,495.00**

All committals will take place in the Pavilion or Tent. Pavilion includes 24 chairs and tent is 12 chairs. This is included in the cost above.

Extra tent and 12 chairs at graveside **\$ 200.00**

Transfer Fee Per Burial Space (Not per Contract) **\$ 500.00**



Concrete Grave liner is the minimum requirement for Rolling Oaks Memorial Center. Please see your funeral home for pricing and purchase.



Top seal vault required for first burial that has a second right of interment. Please see your funeral home for pricing and purchase.

Rolling Oaks Memorial Center Price List

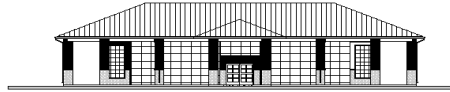
Type of Memorial	Size	Price Range
Flat Companion	60x24x4	\$3,186.55-\$5,613.51
Flat Companion	56x16x4	\$1,981.83-\$3,631.56
Flat Companion	48x18x4	\$1,912.36-\$3,514.46
Flat Companion	48x16x4	\$1,699.64-\$3,165.34
Flat Single	36x14x4	\$1,114.10-\$2,203.10
Flat Single	28x16x4	\$992.00-\$1,998.72
Flat Single	24x12x4	\$638.18-\$1,415.41
Flat Infant	16x28x4	\$992.00-\$1,998.72
Flat Infant	20x10x4	\$450.94-\$1,102.60
Flat Ledger	36x72x4	\$5,734.92-\$9,811.61
Flat Ledger	36x84x4	\$6,691.10-\$11,384.82
Upright Pol. 2	36x24x6	\$2,841.40-\$6,554.37
Upright Pol. 2	24x24x6	\$2,265.66-\$5,435.22
Upright Pol. 2	36x24x6	\$2,990.16-\$6,947.78
Upright Pol. 2	48x20x6	\$3,506.05-\$8,132.65
Upright Pol. 2	48x30x6	\$4,766.69-\$10,789.72
Upright Pol.5	36x24x6	\$3,490.90-\$7,203.87
Upright Pol.5	24x24x6	\$3,274.40-\$6,987.37
Upright Pol.5	36x24x6	\$3,639.66-\$7,597.28
Upright Pol.5	48x20x6	\$4,372.05-\$8,998.65
Upright Pol.5	48x30x6	\$5,632.69-\$11,655.72
Slant Pol.2	24x10x16	\$2,020.24-\$5,744.04
Import Bench	48x14	\$3,979.16-\$9,543.21
Domestic Bench	48x14	\$4,671.96-\$9,123.20
Turned Vase	4x10&5x9	\$171.04-\$396.20
Tapered Vase	8x6&5x4x9	\$138.56-\$504.45
Laser and Final Date		\$324.75-\$2,489.75
Bronze Butterfly and Flag		\$378.88
Oval Memorial Portraits		\$523.93-\$2,617.49
Glass Niches		\$324.75-\$595.38

See Full Memorial Price List For Detail Information

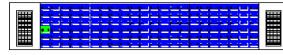
MAUSOLEUM



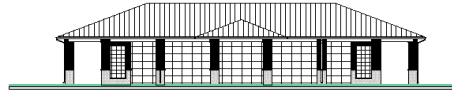
MAUSOLEUM SOUTHWEST ELEVATION



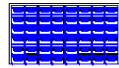
MAUSOLEUM SOUTHWEST ELEVATION



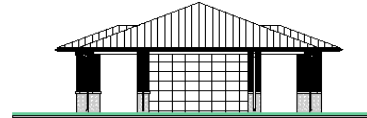
MAUSOLEUM NORTHEAST ELEVATION



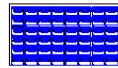
MAUSOLEUM NORTHEAST ELEVATION



SOUTHEAST ELEVATION



SOUTHEAST ELEVATION

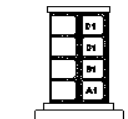


NORTHWEST ELEVATION



NORTHWEST ELEVATION

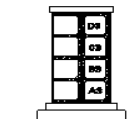
HONOR COLUMBARIUM



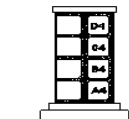
side 1



side 2



side 3



side 4

GARDEN OF SERENITY



elevation view niche west wall



elevation view niche east wall